

Why Mid Caps Now?

We believe mid cap stocks present a unique risk-return profile that combines the growth potential of small caps with the stability of large caps. Additionally, over the past 30 years, mid caps have exhibited stronger absolute and risk-adjusted returns in comparison to both large and small cap stocks. However, despite this impressive performance, investors commonly underallocate assets to U.S. mid cap stocks (see Figures 1 and 2). According to our research, while mid cap stocks represent approximately 20% of the entire U.S. equity market, they only account for 11% of the invested assets.

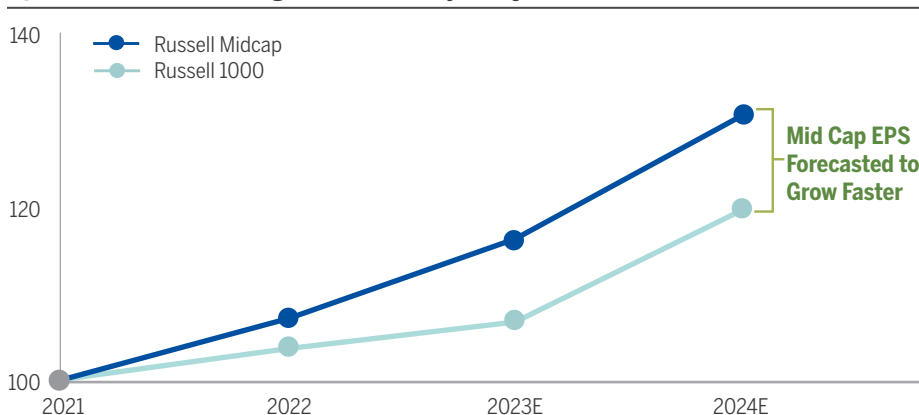
Considering this prevalent underweighting, U.S. mid cap stocks offer a potential opportunity to enhance returns and achieve alpha through effective active management that identifies undiscovered opportunities. We believe the following factors should be considered when evaluating mid cap stocks.

Faster Growth Potential Than Large Caps

The growth potential of mid caps can be compelling as they expand their market share, enter new markets, or innovate in their respective industries. Additionally, we believe mid cap companies are generally more agile and can quickly adapt to changing market conditions and capitalize on emerging opportunities. Our research shows that earnings estimates for mid cap stocks are projected to grow faster than many large caps, which may have already reached their life cycle maturity. Over the past 30 years through July 2023, the earnings per share (EPS) growth rate for the S&P MidCap 400 Index has been over 275 basis points (bps) per year greater than the S&P 500 Index. This has resulted in S&P MidCap 400 Index earnings increasing 2,025%, cumulative, during this time period compared to 950% for the S&P 500 Index.

In addition to a structural growth advantage evidenced by historical data, mid cap stocks are forecast to grow their earning much faster than large cap stocks (see Figure 3).

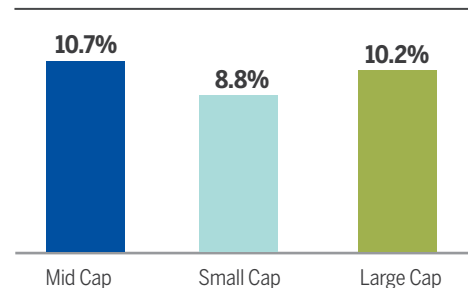
Figure 3: **Estimated Earnings Per Share Trajectory**



Source: FactSet as of July 31, 2023. Estimated EPS trajectory based on consensus estimates from FactSet.

Figure 1:

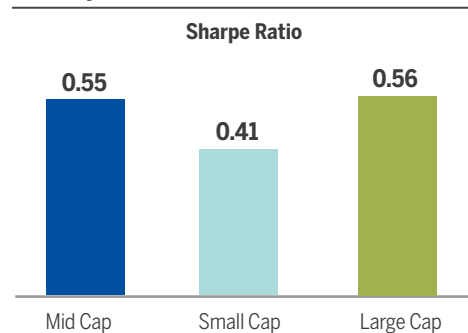
Annualized Total Returns



Source: See bottom of Figure 2.

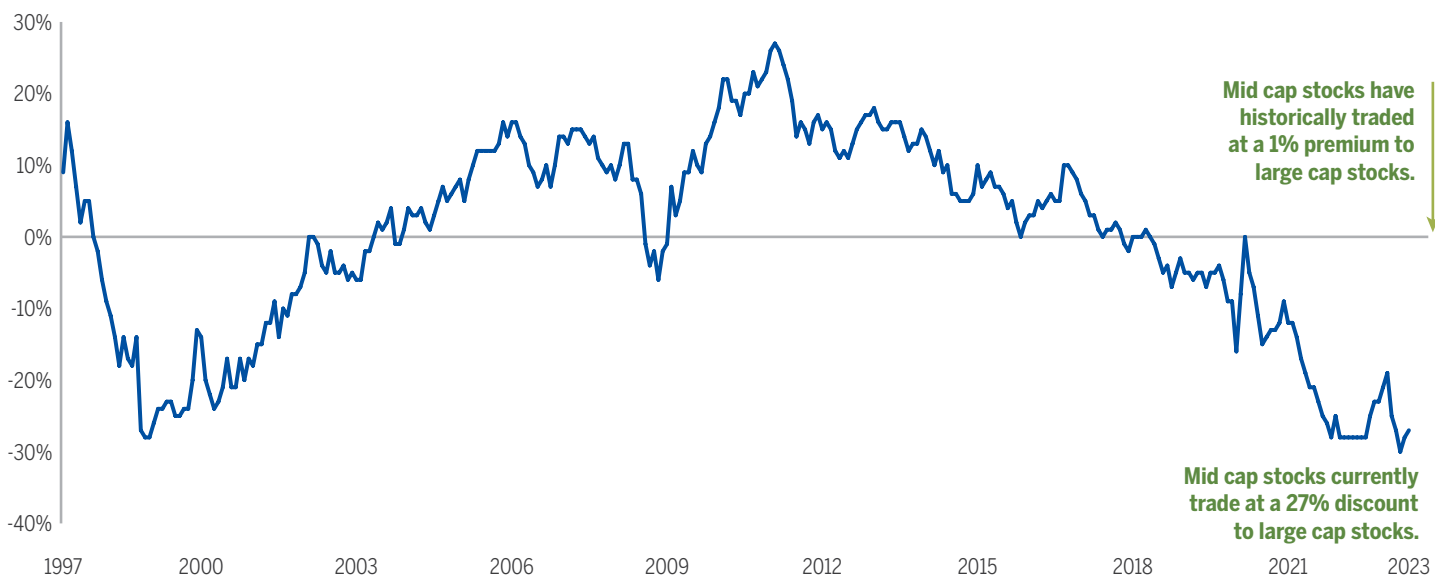
Figure 2:

Risk-Adjusted Return Metrics



Source: FactSet for the 30-year period ended July 31, 2023. Mid Caps represented by the Russell Midcap Index; Small Caps represented by the Russell 2000; Large Caps represented by the Russell 1000.

Figure 4: Price-to-Earnings S&P MidCap 400 / S&P 500



Source: FactSet as of July 31, 2023. P/E is price divided by earnings per share over past 12-months.

Attractive Relative Valuation

In recent years, U.S. mid cap stocks have experienced underperformance, leading to a decrease in their overall valuation relative to U.S. large cap stocks. Currently, however, mid cap stocks are trading at a significant 27% discount compared to large caps, when measured by P/E, which are below December 1999 levels (see Figure 4). We consider this relative valuation to be a critical factor when evaluating mid cap stocks as an investment opportunity.

Improved Portfolio Efficiency

The lower correlation of mid cap stocks to large cap stocks can be an attractive feature for investors seeking diversification benefits (see Figure 5). By adding mid cap stocks to a portfolio that already includes large cap stocks, we believe investors can potentially achieve a more balanced risk profile, improve portfolio efficiency, and reduce overall portfolio volatility.

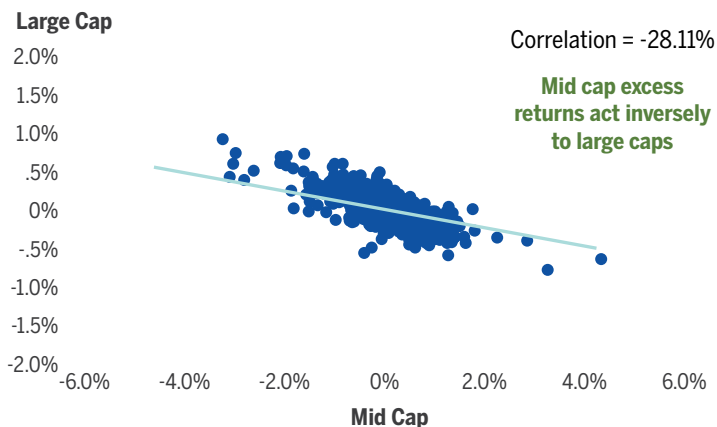
THE ALGER MID CAP GROWTH STRATEGY

Brandon Geisler, portfolio manager for the Alger Mid Cap Growth strategy with more than two decades of mid cap investing experience, has an investment philosophy focused on using fundamental research to identify and invest in mid cap stocks with solid growth potential that also demonstrate high quality company fundamentals. Brandon's experience during the global financial crisis in 2008-2009 and the COVID-19 pandemic in 2020 helped to inform his investment

philosophy. As such, he typically pursues high-quality companies with strong balance sheets, consistent revenue growth, high free cash flow and relatively low net debt, as these companies may be better positioned to endure economic downturns and provide greater overall stability.

Brandon's portfolio construction and philosophy reflects a balanced approach with a focus on quality, value, and patience in finding ideal entry points. Within the portfolio, Brandon allocates his positions into three distinct buckets:

Figure 5: Excess Returns



Source: FactSet for the 20-year period ended August 31, 2023. Calculated weekly using Russell Midcap Index (as representative of mid caps) and S&P 500 Index (as representative of large caps) returns relative to the Wilshire 5000 Index. **The performance data quoted represents past performance, which is not an indication or a guarantee of future results.**

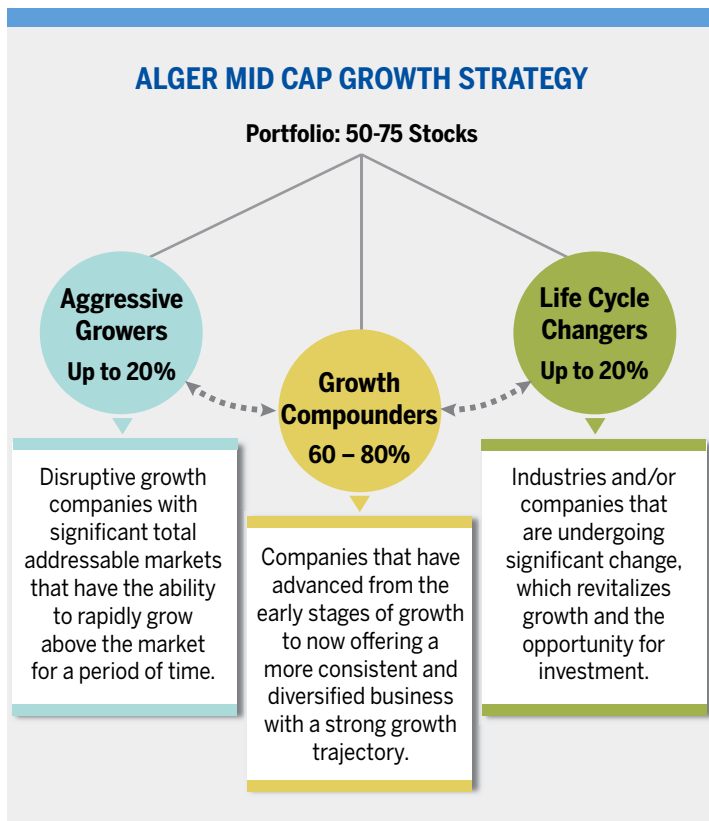
Aggressive Growers, Growth Compounders and Life Cycle Changers (see Figure 6).

Portfolio Construction

The Alger Mid Cap Growth strategy is constructed with a specific focus on three unique categories:

- **Growth Compounders.** (60-80% of holdings) The majority of the portfolio holdings in the strategy, these are companies that have transitioned from early-stage growth to a more stable and diversified business model, demonstrating strong growth prospects. Preferably, they are top players within an industry.
- **Life Cycle Changers.** (0-20%) These are companies undergoing significant transformations. They benefit from factors like new management, innovative products, mergers & acquisitions, and debt restructuring, leading to a potential “growth renaissance” for these companies.
- **Aggressive Growers.** (0-20%) The third category consists of disruptive high-growth oriented companies operating in large total addressable markets. These firms exhibit the potential to achieve rapid growth while still capturing significant market share.

Figure 6: **Portfolio Construction**



We believe the use of these three flexible buckets in constructing the portfolio creates a pendulum effect that may optimize the strategy’s potential to achieve high risk-adjusted returns.

Another key attribute of the portfolio is striving to maintain low turnover. The majority of companies in the portfolio have well-established businesses with relatively low earnings variability, primarily in industries such as technology, health care, business and consumer. Our intention is to invest the core of the portfolio in high-quality, long-duration investment ideas. By doing so, we aim to reduce turnover and minimize trading costs, which we believe will ultimately enhance overall returns.

Stock Examples

HEICO Corporation (HEICO) is an example of a Growth Compounder in the portfolio. We believe that HEICO, a rapidly growing technology-driven Aerospace company, is a high quality compounder levered to strong fundamentals in the commercial and military aerospace aftermarket. HEICO builds parts that are PMA (FAA Parts Manufacturer Approval), where their distinct approach positions them to leverage a large, underpenetrated total addressable market, creating a competitive moat as they increase market penetration. With 19 of the 20 largest airlines in the world as customers, HEICO appears to be a classic growth compounder with a differentiated business with revenue visibility.

An example of a Life Cycle Changer in the portfolio is **GFL Environmental (GFL)**. GFL is a waste and environmental services business that has been undergoing a transformational change of its balance sheet. GFL went through a period of M&A over the past few years, which included inheriting sizable debt. Since then, GFL has committed to reducing that high leverage by 2025 by selling off non-core assets and focusing on generating high free cash flow. We believe this reduction in leverage will attract investor attention and that this stock may even become a “Growth Compounder” if GFL continues to delever and focus on their core business.

MongoDB (MDB) represents an Aggressive Grower within the portfolio. MDB is an open-source database management system that serves as a repository for AI applications, which are used for training machine learning models and handling diverse data types. Earlier this year, MDB’s CEO disclosed that over 1,500 AI companies were now building applications on MDB, up from only 300 companies a few months ago. While we remain overly cautious regarding the current “hype” of AI, we believe that MDB is uniquely

positioned to take advantage of the AI adoption tailwind and should therefore be an aggressive grower in the near term, and potentially transition into a growth compounder over the long-term.

What Lies Ahead for the Alger Mid Cap Growth Portfolio?

The core of the Alger Mid Cap Growth portfolio will continue to consist primarily of compounding growth companies that have the potential to offer robust total returns, encompassing organic growth, mergers and acquisitions, and share repurchases. Additionally, the portfolio will place emphasis on investments in high-quality companies across various sectors.

To identify unique opportunities, the portfolio will search diligently for “diamonds in the rough”—high-quality companies in underperforming areas of the market. Furthermore, the portfolio aims to include companies benefiting from innovations such as artificial intelligence, automation, robotics, labor competition, and renewable energy. Over the coming years, the strategy seeks to maintain a volatility profile in line with or lower than the benchmark, while also achieving a low overall turnover profile, demonstrating a focus on tax efficiency. As a result, we strive to achieve a relatively lower tracking error, providing investors with a smoother ride and reduced portfolio volatility.

The views expressed are the views of Fred Alger Management, LLC (FAM) and its affiliates as of September 2023. These views are subject to change at any time and may not represent the views of all portfolio management teams. These views should not be interpreted as a guarantee of the future performance of the markets, any security or any funds managed by FAM. These views are not meant to provide investment advice and should not be considered a recommendation to purchase or sell securities. Holdings and sector allocations are subject to change.

Important Information for US Investors: This material must be accompanied by the most recent fund fact sheet(s) if used in connection with the sale of mutual fund and ETF shares. Fred Alger & Company, LLC serves as distributor of the Alger mutual funds.

Important Information for UK and EU Investors: This material is directed at investment professionals and qualified investors (as defined by MiFID/FCA regulations). It is for information purposes only and has been prepared and is made available for the benefit investors. This material does not constitute an offer or solicitation to any person in any jurisdiction in which it is not authorised or permitted, or to anyone who would be an unlawful recipient, and is only intended for use by original recipients and addressees.

The original recipient is solely responsible for any actions in further distributing this material and should be satisfied in doing so that there is no breach of local legislation or regulation. Certain products may be subject to restrictions with regard to certain persons or in certain countries under national regulations applicable to such persons or countries.

Alger Management, Ltd. (company house number 8634056, domiciled at 85 Gresham Street, Suite 308, London, EC2V 7NQ, UK) is authorised and regulated by the Financial Conduct Authority, for the distribution of regulated financial products and services. FAM and/or Weatherbie Capital, LLC, U.S. registered investment advisors, serve as subportfolio manager to financial products distributed by Alger Management, Ltd.

Alger Group Holdings, LLC (parent company of FAM and Alger Management, Ltd.), FAM, and Fred Alger & Company, LLC are not an authorized person for the purposes of the Financial Services and Markets Act 2000 of the United Kingdom (“FSMA”) and this material has not been approved by an authorized person for the purposes of Section 21(2)(b) of the FSMA.

Important information for Investors in Israel: This material is provided in Israel only to investors of the type listed in the first schedule of the Securities Law, 1968 (the “Securities Law”) and the Regulation of Investment Advice, Investment Marketing and Investment Portfolio Management Law, 1995. The Fund units will not be sold to investors who are not of the type listed in the first schedule of the Securities Law.

Risk Disclosures: Investing in the stock market involves risks, including the potential loss of principal. Growth stocks may be more volatile than other stocks as their prices tend to be higher in relation to their companies’ earnings and may be more sensitive to market, political, and economic developments. Local, regional or global events such as environmental or natural disasters, war, terrorism, pandemics, outbreaks of infectious diseases and similar public health threats, recessions, or other events could have a significant impact on investments. A significant portion of assets may be invested in securities of companies in related sectors or industries, and may be similarly affected by economic, political, or market events and conditions and may be more vulnerable to unfavorable sector or industry developments. Investing in companies of medium capitalizations involves the risk that such issuers may have limited product lines or financial resources, lack management depth, or have limited liquidity. Assets may be focused in a small number of holdings, making them susceptible to risks associated with a single economic, political or regulatory event than a more diversified portfolio. Foreign securities involve special risks including currency fluctuations, inefficient trading, political and economic instability, and increased volatility. At times, cash may be a larger position in the portfolio and may underperform relative to equity securities. **Past performance is not indicative of future performance.**

Sharpe Ratio compares fund returns to a risk-free investment given a fund’s level of risk. A high Sharpe ratio ranking indicates that returns are generated by skill, not by undertaking undue risk. Earnings per share (EPS) is the portion of a company’s earnings or profit allocated to each share of common stock. P/E is price divided by earnings per share over last 12-months. FactSet is an independent source which we believe to be reliable. Fred Alger Management, LLC, however, makes no representation that it is complete or accurate.

Investing in innovation is not without risk and there is no guarantee that investments in research and development will result in a company gaining market share or achieving enhanced revenue. Companies exploring new technologies may face regulatory, political or legal challenges that may adversely impact their competitive positioning and financial prospects. Also, developing technologies to displace older technologies or create new markets may not in fact do so, and there may be sectorspecific risks as well. As is the case with any industry, there will be winners and losers that emerge and investors therefore need to conduct a significant amount of due diligence on individual companies to assess these risks and opportunities.

The Russell Midcap Index is an unmanaged index and measures the performance of the mid-cap segment of the U.S. equity universe. Russell 2000 Index is an unmanaged index considered representative of small-cap stocks. S&P 500 Index is an unmanaged index generally representative of the U.S. stock market without regard to company size. S&P MidCap 400 Index is an unmanaged index considered representative of mid-sized US companies. The Wilshire 5000 Total Market Index (Wilshire 5000®) is a broad-based, market capitalization-weighted index commonly used as a benchmark for the entirety of the U.S. stock market. The indices presented are provided for illustrative purposes, reflect the reinvestment of dividends and do not assess fees and expenses that would have the effect of reducing returns. Investors cannot invest directly in any index. The index performance does not represent the returns of any portfolio advised by Fred Alger Management, LLC and actual client results might differ materially than the indices shown. Note that past performance is no guarantee of future results. Comparison to a different index might have materially different results than those shown.

The S&P indexes are a product of S&P Dow Jones Indices LLC and/or its affiliates and has been licensed for use by Fred Alger Management, LLC and its affiliates. Copyright 2021 S&P Dow Jones Indices LLC, a subsidiary of S&P Global Inc. and/or its affiliates. All rights reserved. Redistribution or reproduction in whole or in part are prohibited without written permission of S&P Dow Jones Indices LLC. For more information on any of S&P Dow Jones Indices LLC’s indices please visit www.spdji.com. S&P® is a registered trademark of Standard & Poor’s Financial Services LLC and Dow Jones® is a registered trademark of Dow Jones Trademark Holdings LLC. Neither S&P Dow Jones Indices LLC, Dow Jones Trademark Holdings LLC, their affiliates nor their third party licensors make any representation or warranty, express or implied, as to the ability of any index to accurately represent the asset class or market sector that it purports to represent and neither S&P Dow Jones Indices LLC, Dow Jones Trademark Holdings LLC, their affiliates nor their third party licensors shall have any liability for any errors, omissions, or interruptions of any index or the data included therein.

Frank Russell Company (“Russell”) is the source and owner of the trademarks, service marks and copyrights related to the Russell Indexes. Russell® is a trademark of Frank Russell Company. Neither Russell nor its licensors accept any liability for any errors or omissions in the Russell Indexes and/or Russell ratings or underlying data and no party may rely on any Russell Indexes and/or Russell ratings and/or underlying data contained in this communication. No further distribution of Russell Data is permitted without Russell’s express written consent. Russell does not promote, sponsor or endorse the content of this communication.

The following positions represent assets under management for the Alger Mid Cap Growth Strategy as of July 31, 2023: HEICO Corp, 2.30%; GFL Environmental, Inc., 3.87%; Mongoddb, Inc., 2.03%.